



QUICK INSTALLATION

SIMPLIFY MONITORING CONTROL SYSTEM

en



DANGER

Batteries can be highly dangerous if swallowed. Therefore, keep batteries out of reach of children. If a battery has been swallowed, seek medical advice immediately.



WARNING

Risk of injury

Should a battery have leaked, avoid contact with skin, eyes and mucous membranes.

If necessary, rinse the affected areas with plenty of clean water and consult a doctor immediately.



CAUTION

Lithium batteries can explode if inserted the wrong way. Therefore, by all means ensure correct polarity (+/-) when inserting batteries.



Appliances marked with this symbol must not be disposed of along with household refuse!

You are legally obliged to dispose of old appliances separately from household refuse. For information about how to despose, contact local authorities.



Batteries must not be disposed of along with household refuse! You are legally obliged to dispose of flat batteries at a local authority collection point or to return them to a battery retailer.

Dantherm can accept no responsibility for possible errors and changes (en)

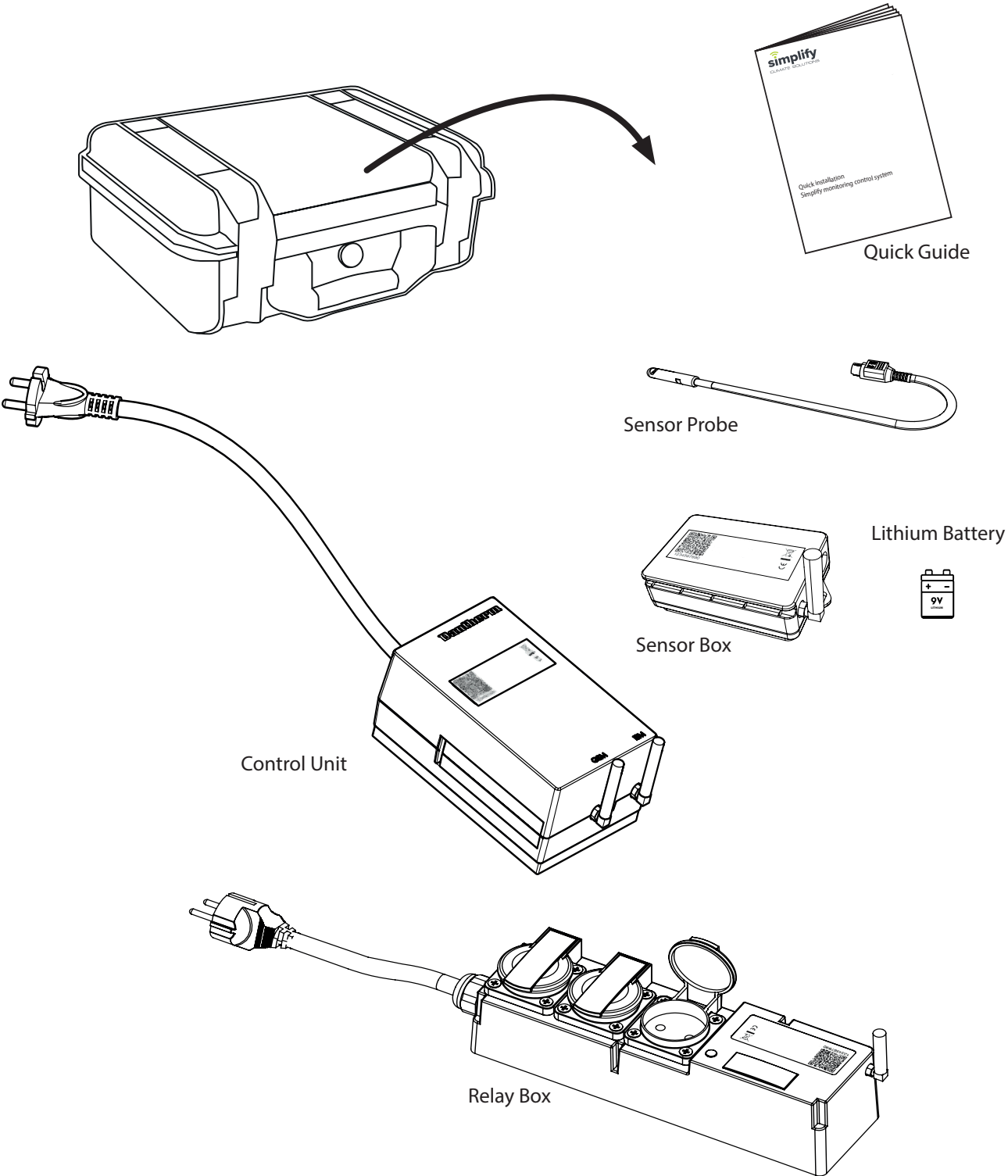
Der tages forbehold for trykfejl og ændringer (da)

Irrtümer und Änderungen vorbehalten (de)

Dantherm n'assume aucune responsabilité pour erreurs et modifications éventuelles (fr)



Content of suitcase may vary



Simplify Monitoring Control System

1



Android 5.1 or later version



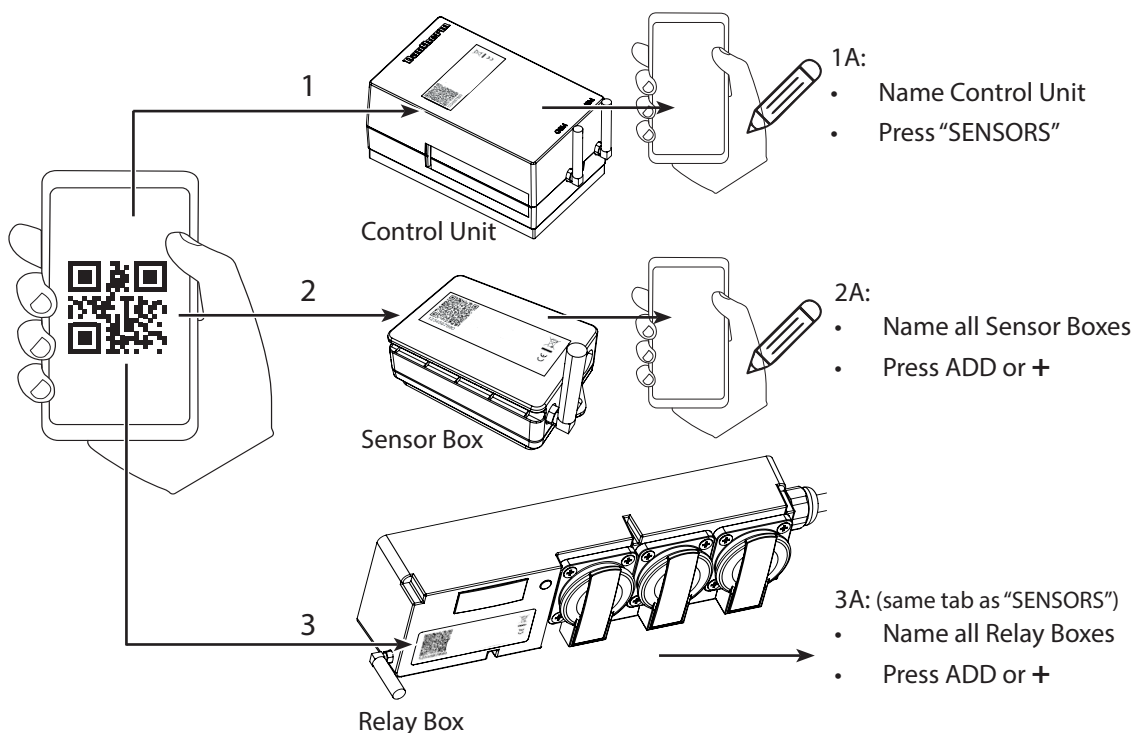
IOS IOS10 or later version

Download APP



2

SCAN all the components QR-code in the order as shown:



OBS!

If CDT's are fitted with Integration Box

- Scan the QR code on the CDT, name it and press ADD or +.

If Simplify CC4 box is used:

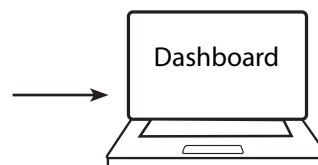
- Scan the QR code on the box, name it and press ADD or +

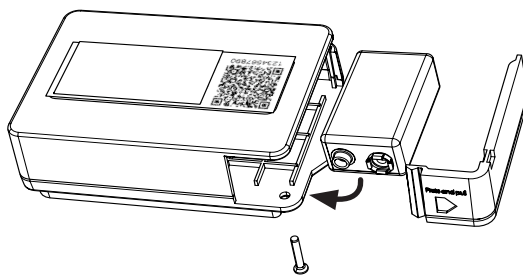
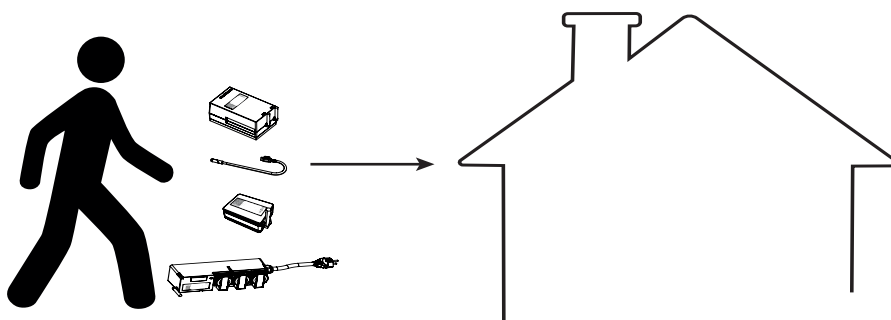
When all components are scanned and named:

- Press "Control Unit"
- "Register"



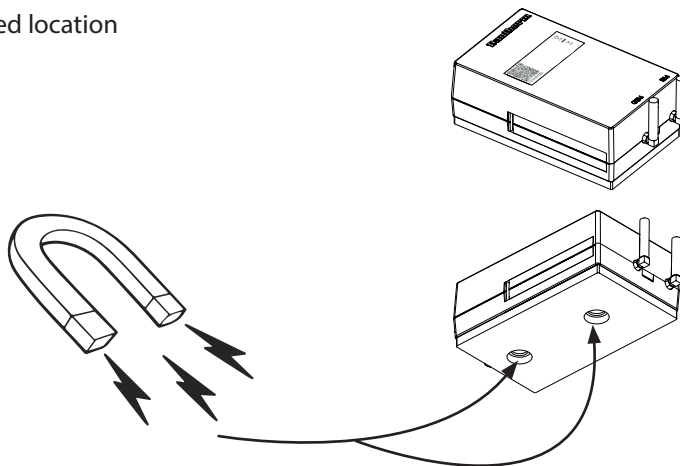
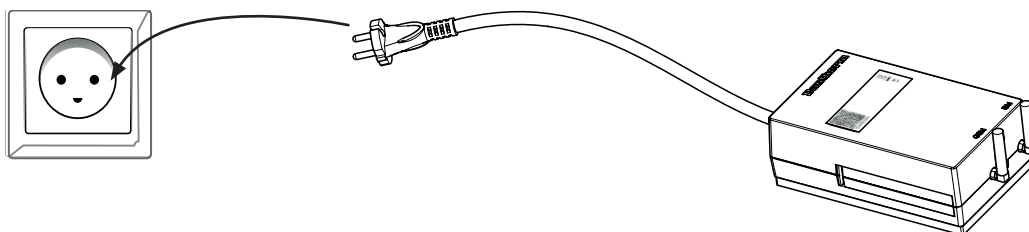
Check installation at: <https://dantherm.clouddashboard.net>
Enter username and password







 3 4 5

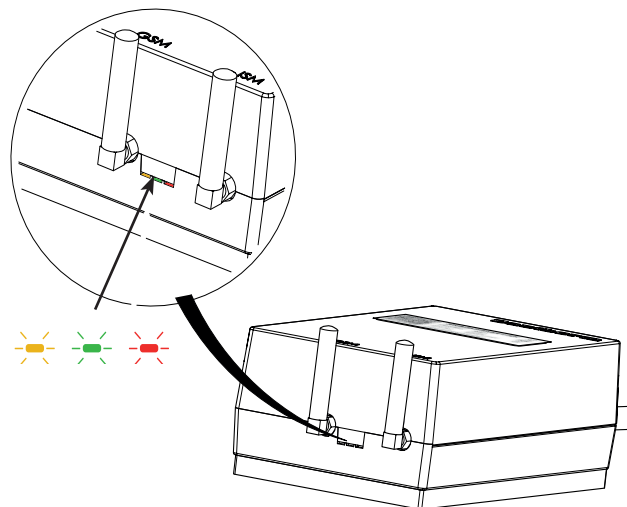
Place Control Unit on desired location

E.g. you can apply the Control Unit, by using the magnets on the backside

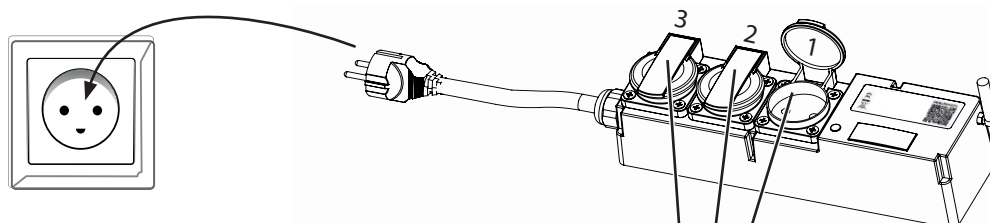
 6

7

Signal	Funktion
	GSM signal 
	<u>Flashing:</u> Start-up/installation phase or in the absence of contact with sensor boxes. Do not connect sensor boxes untill green LED flash on control box
	<u>Constant:</u> All sensor boxes has contact to the Control Unit No 230 V power supply Emergency power: ON



8



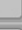



Power on:



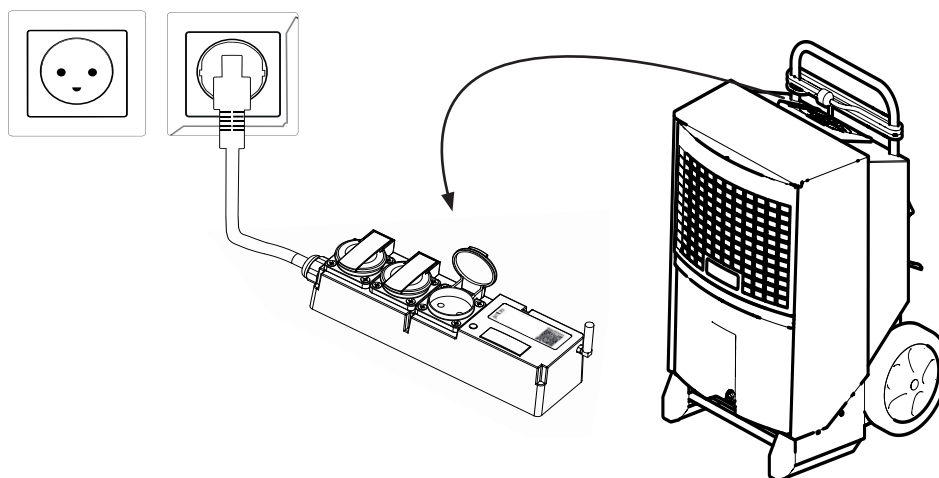
Connected to Contol Unit:



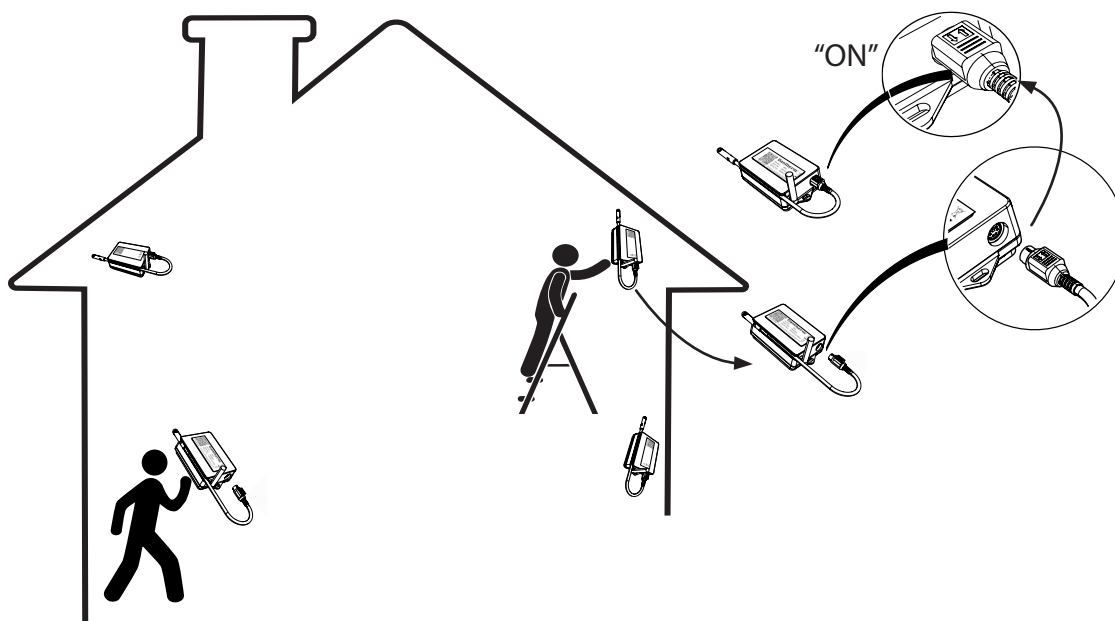
PASSIVE		
Name: s_4194405		
Type: Relay box		
ID: 4194405		
PWR	0.000 kW	See all data
1	ON	 ON See all data
2	OFF	 OFF See all data
3	ON	 ON See all data

! OBS!

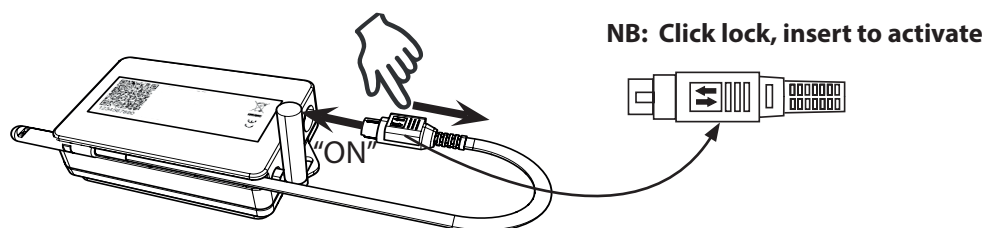
Various equipment can be connected to the Relay Box

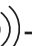



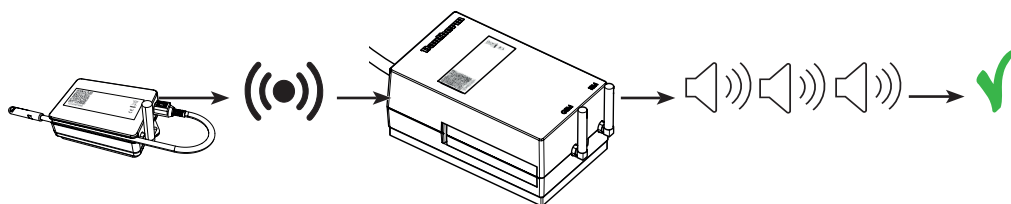
9



10



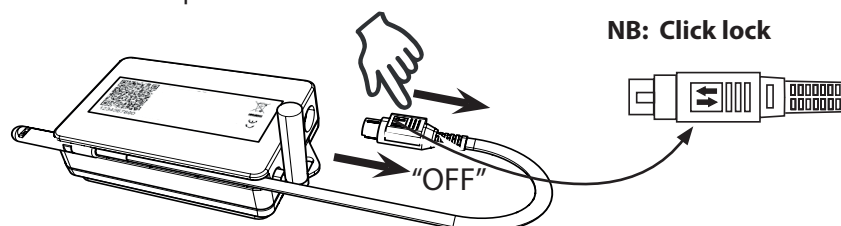
When the sensor probe is inserted into the socket, the sensor box is "ON"       

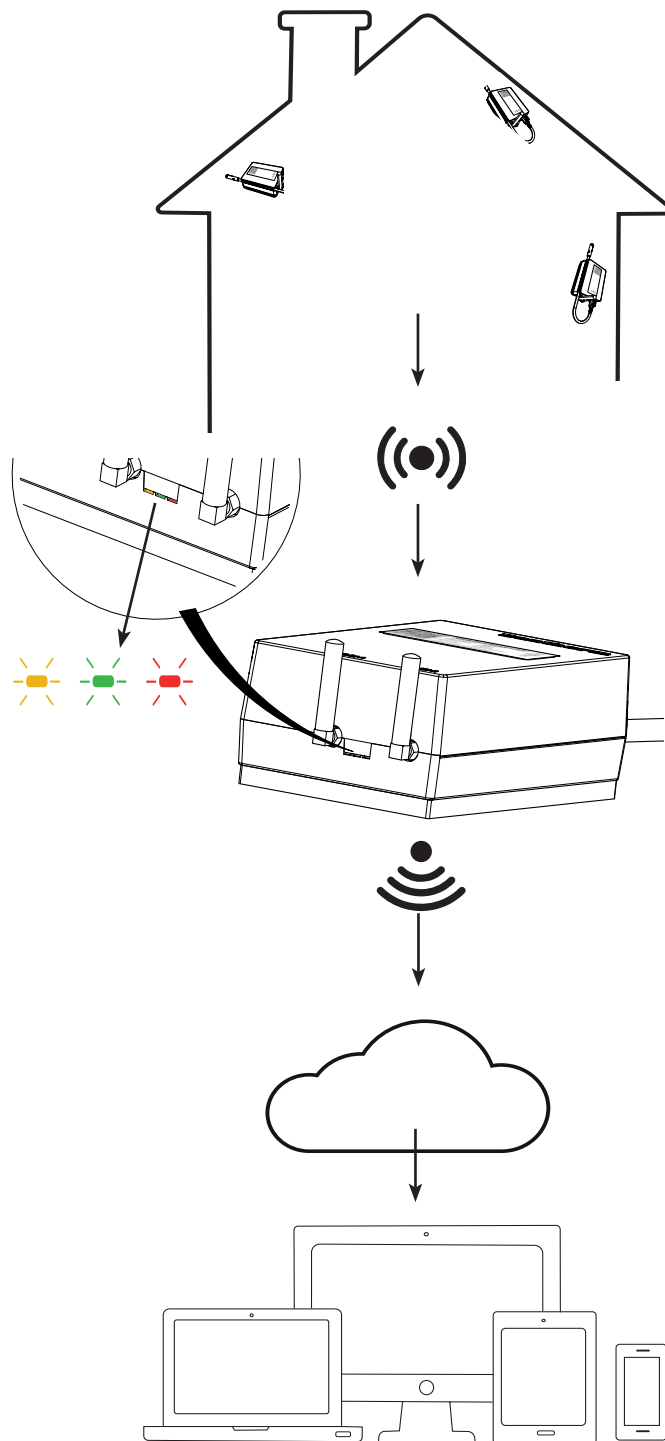


 OBS!

Remember to disconnect the sensor probe when sensor box is not in use, in order to prevent the battery from running out of power .

Sensor is now in "OFF" position





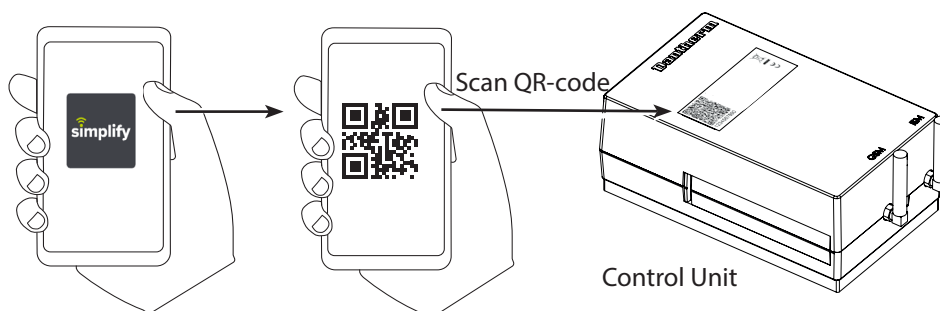
OBS!

<https://dantherm.clouddashboard.net>

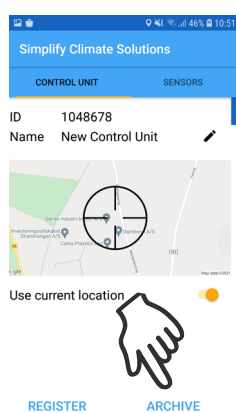
Check, that all components are "ACTIVE" in the dashboard

How to close a case

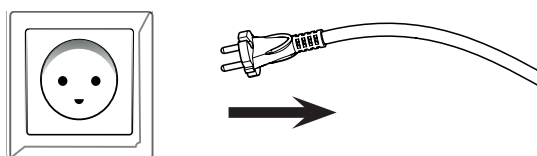
1



2

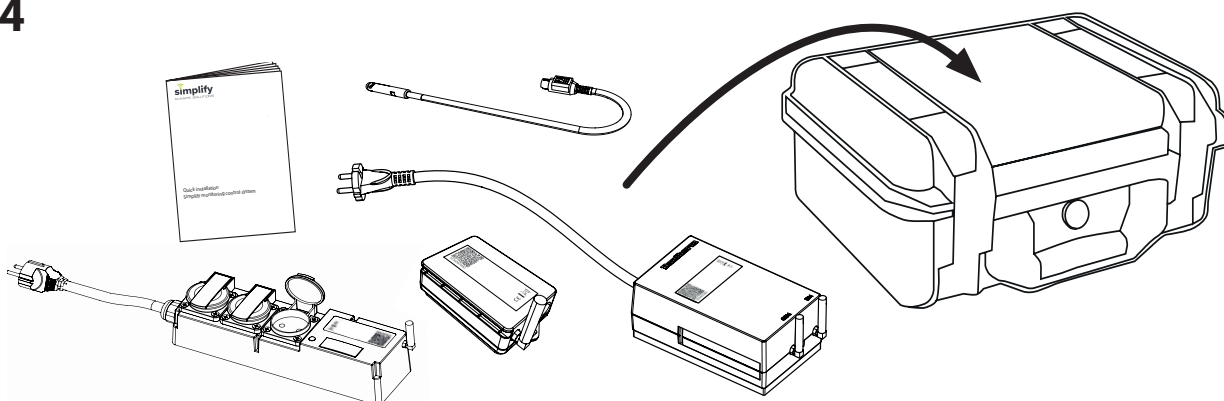


3



4

Place components in the suitcase



OBS!

Check that case is archived in DASHBOARD



Download full version
<https://support.dantherm.com>



Dantherm®
CONTROL YOUR CLIMATE

en

Declaration of Conformity

Electronics

Dantherm A/S
Marienlystvej 65
DK - 7800 Skive

Tel.: +45 96 14 37 00
Fax: +45 96 14 38 00

Declaration of following product:

Product name: **Simplify control unit, Simplify sensor box, Simplify on/off relay, Simplify integration sensor**

Product no.: 380000, 380003, 380005, 380006

The product is in conformity with the following directives:

2014/35/EU	Low Voltage Directive
2014/53/EU	Radio Equipment Directive
2014/30/EU	Electromagnetic Compatibility Directive
2014/29/EU	RoHS Directive
1907/2006/EC	REACH Regulation

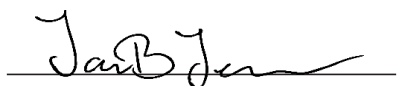
- and is manufactured in conformity with the following harmonised standards:

- * EN62368-1:2020 Audio/video, information, and communication technology equipment – Part 1: Safety requirements
- * EN 301 489-1 V2.1.1:2017 Electromagnetic compatibility and Radio spectrum Matters (ERM);
- * EN 301 489-3 V2.1.1:2019 Electromagnetic compatibility and Radio spectrum Matters (ERM)
- * EN 301 511 V12.5.1:2017 Global System for Mobile communications (GSM).
- * EN 300 220-2 V3.2.1:2018 Short Range Devices (SRD) operating in the frequency range 25 MHz to 1000 MHz; Part 2
- * EN 300 220-1 V3.1.1:2017 Short Range Devices (SRD) operating in the frequency range 25 MHz to 1000 MHz ; Part 1

Skive, 2021-04-21.



Product Development



Managing director Jakob Bonde Jensen



Manufacturers details:

Dantherm Intelligent Monitoring A/S

Kirkebjerg Parkvej 12
Brøndby DK 2605
Denmark
t. +45 70 22 11 20
e. info@dantherm.com

KEEP UPDATED
FOLLOW US ON:



danthermgroup.com



109095